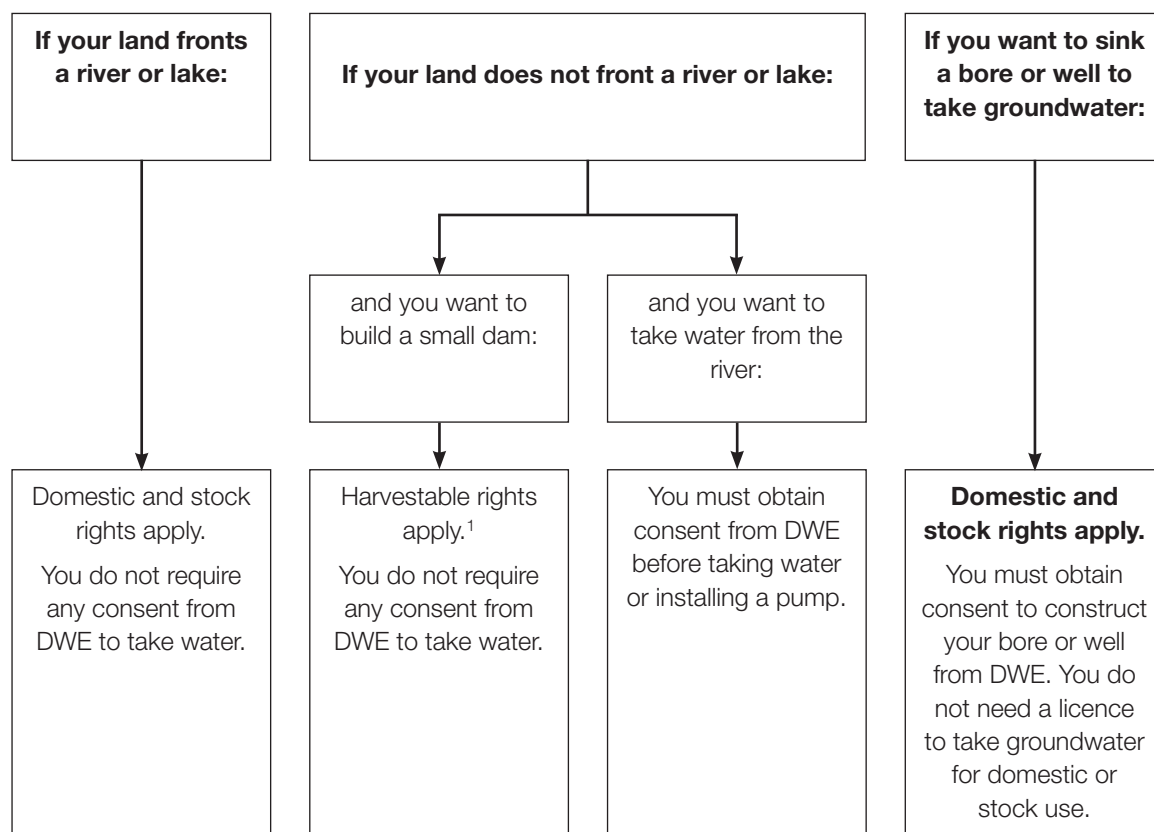




Water for my rural property - do I require a licence?

The requirement for a licence (or other approval) from the Department of Water and Energy (DWE) for obtaining water on your rural property depends on how and why you want to use the water.

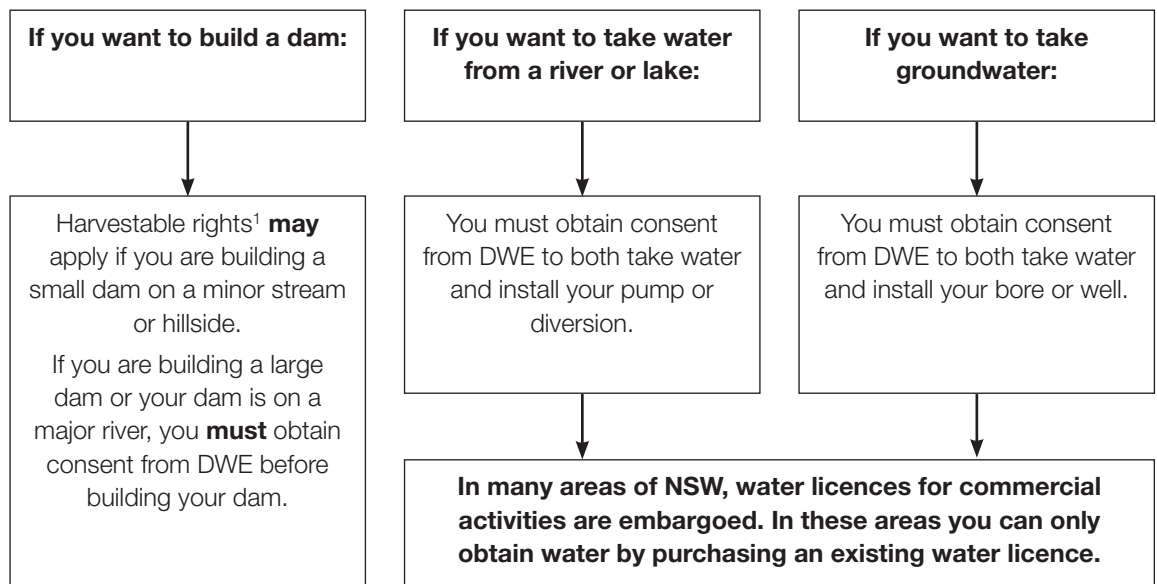
For domestic and stock use of water



Rainwater tanks are exempt from DWE's water licensing requirements.
(Some local governments may require development consent for rainwater tanks.)

¹ Harvestable rights allow you to build small dams under specific circumstances only - see information sheet *What are rural landholders' basic rights to water?*

For commercial activities (eg irrigation, mining, aquaculture, feedlots, piggeries, poultry farms, golf/ sporting areas, guest accommodation, water bottling, snow making)



¹ Harvestable rights allow you to build small dams under specific circumstances only - see information sheet Rural landholder rights to water.

Where do I get more information?

Contact the water licensing officer at your local Department of Water and Energy office (contact details are on the website or phone 1800 353 104), or email information@dwe.nsw.gov.au

More information sheets on water management in NSW are available on our website www.dwe.nsw.gov.au